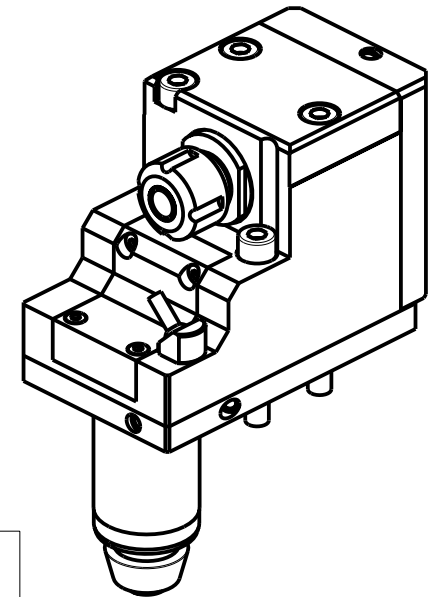
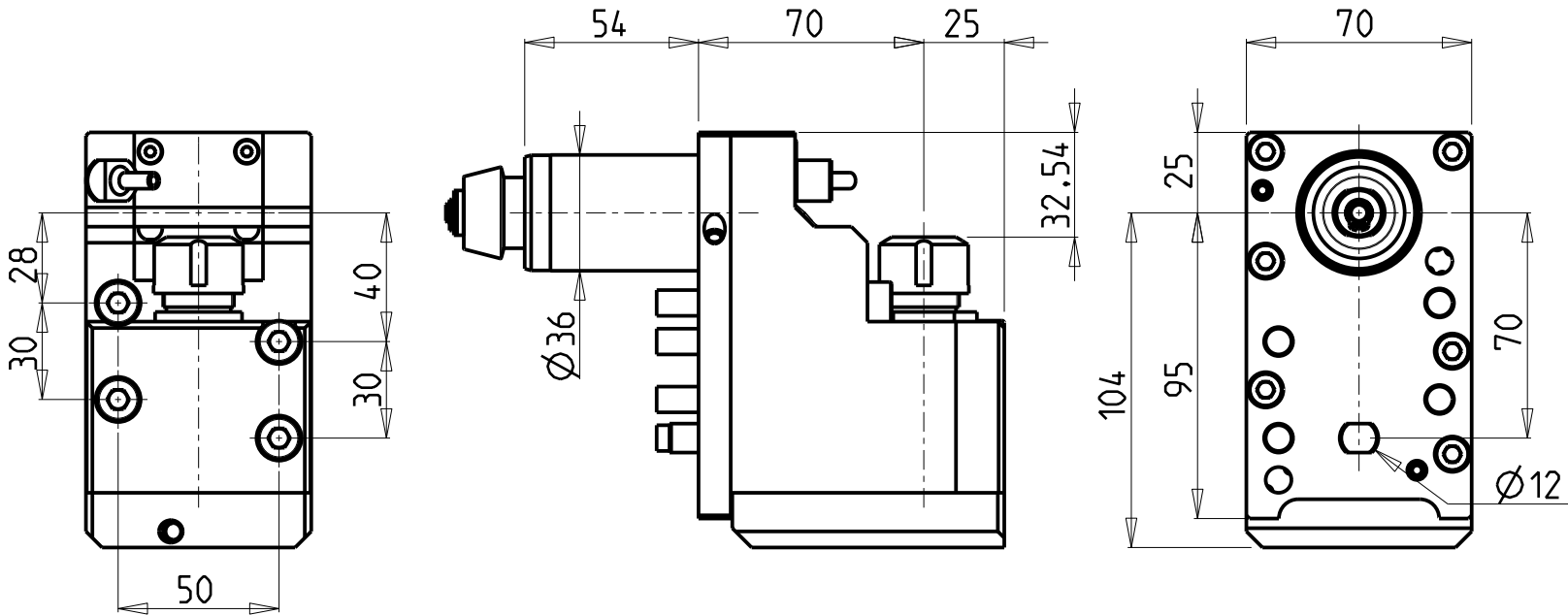


ATTENZIONE - ATTENTION - ACHTUNG

- Per lo smontaggio degli utensili utilizzare sempre la chiave di contrasto come indicato nel manuale d'uso.
- For disassembly of the tools use always the contrast key as mentioned in the user instructions.
- Fuer das Abmontieren der Werkzeuge immer den Gegenschuessel benutzen wie in der Bedienungsanleitung erwaehnt.

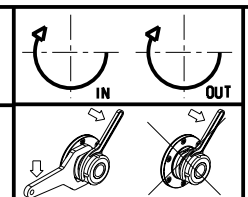


| Cod. MT | Cod. CITIZEN | Mandrino Spindle Spindel | I | RPM | Reversibile lato mandrino/contromandrino Reversible sub/main spindle side Umkehrbare Spindel-seite/ Gegenspindel-seite | Lubr.interna Coolant through Innenkuehlung | Lubr.esterna Ext. coolant Aussenkuehlung | CHIAVI INCLUSE Keys included Schuessel inbegriffen | |
|------------|--------------|--------------------------|-----|------|---|--|--|--|------------|
| CTZ0010116 | KSE210MT | ER16 | 1:1 | 6000 | X | | X | CHSTER16 | CHUB27_SP3 |
| CTZ0010216 | KSE210MTTC | ER16 | 1:1 | 6000 | X | P=70bar | X | CHSTER16 | CHUB27_SP3 |

CITIZEN
MOD: M20 - M32

MODULO MOTORIZZATO RADIALE
Radial driven tool
Radial angetriebenes Werkzeug

Subject to change without notice.



M.T. srl
Via Casino Albini 480
Tel. 0541/956034-957884
Fax 0541/956341
47842 S. GIOVANNI IN M. (RN)
e-mail: mtma@mtmarchetti.com
http://www.mtmarchetti.com



CTZ150-1-10