

Cod. MT	Mandrino Spindle Spindel	I	RPM	Coppia Max Max Torque Max Drehmoment	Lubrificazione est. Ext. coolant Aussenkühlung	A	A1	D	L	CHIAVI INCLUSE Keys included Schluessel inbegriffen
MZK0610120	ER20	1:1	6000	40Nm	X	85.16	-	-	-	CHUB36 CHSTER20
MZK0610125	ER25	1:1	6000	40Nm	X	86.16	-	-	-	CHUB36 CHSTER25
MZK0610516	Ø16x17	1:1	6000	40Nm	X	-	65	16	17	CHUB36 CH_VTCROCE_M08
MZK0610522	Ø22x19	1:1	6000	40Nm	X	-	66	22	19	CHUB36 CH_VTCROCE_M10
MZK0610519	Ø3/4"x3/4"	1:1	6000	40Nm	X	-	65	3/4"	3/4"	CHUB36 CH_VTCROCE_M08

**MAZAK**

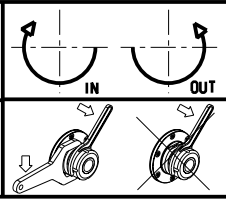
QT NEXUS 300/350/400/450M/MY - QT NEXUS 30011/35011/40011/45011 M/MY - SQT 28/30 - MEGATURN NEXUS 900M  
 SLANT TURN NEXUS 500/550M - UNIVERSAL 2000/3000 M - HYPER QUADREX 450M - SQT 300/350/400/450M/MY

MODULO MOTORIZZATO ORIENTABILE ±90° CON NONIO DIGITALE

±90° adjustable angle driven tool with digital display

Angetriebenes Werkzeug schwenkbar ±90° mit digital display

Subject to change without notice.



**M.T. srl**  
 Via Casino Albini 480  
 Tel. 0541/956034-957884  
 Fax 0541/956341  
 47842 S. GIOVANNI IN M. (RN)  
 e-mail: mtma@mtmarchetti.com  
 http://www.mtmarchetti.com



MZK333-5-01