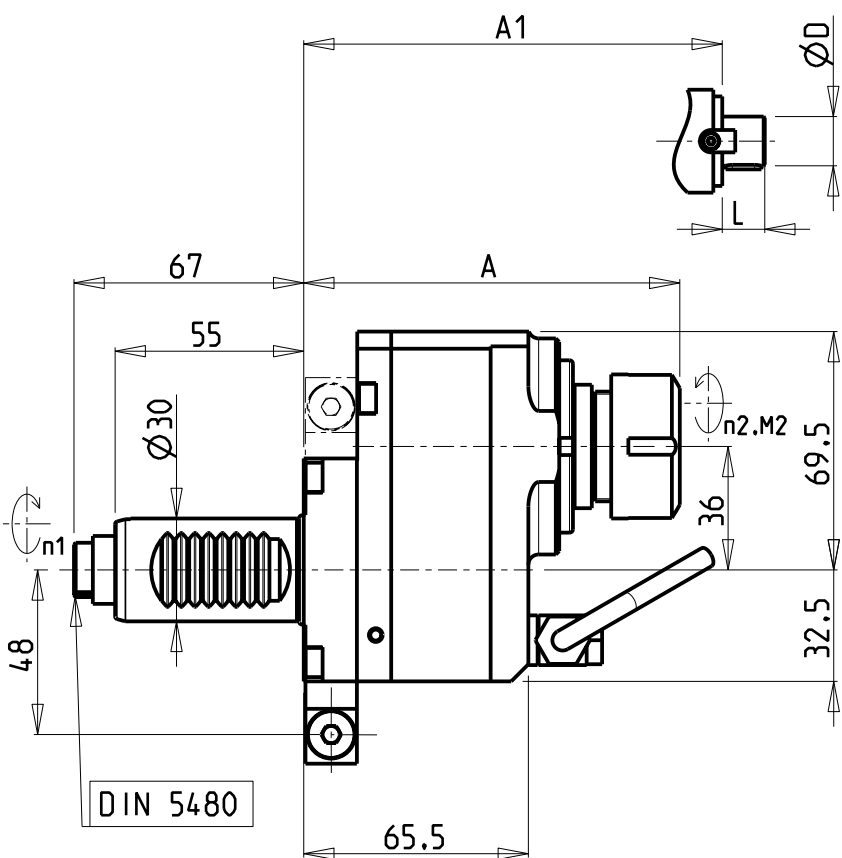


ATTENZIONE - ATTENTION - ACHTUNG

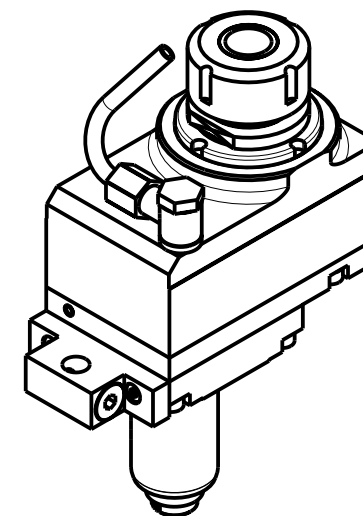
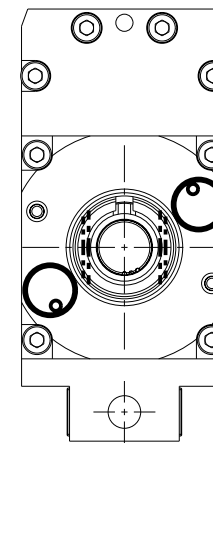
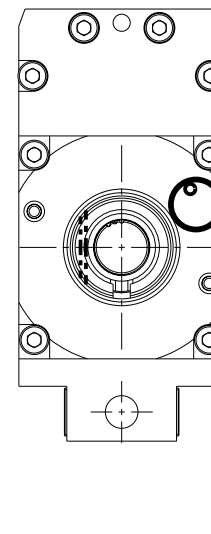
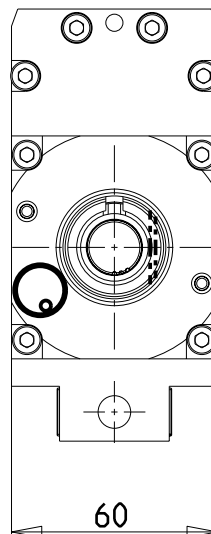
- Per lo smontaggio degli utensili utilizzare sempre la chiave di contrasto come indicato nel manuale d'uso.
- For disassembly of the tools use always the contrast key as mentioned in the user instructions.
- Fuer das Abmontieren der Werkzeuge immer den Gegenschlüssel benutzen wie in der Bedienungsanleitung erwäehnt.



versione dx  
right version  
version rechts

versione sx  
left version  
version links

versione universale  
universal version  
universal version



Cod. MT

versione dx right version version rechts	versione sx left version version links	versione universale universal version universal version	Mandrino Spindle Spindel	I (n1:n2)	RPM max n2	Coppia Max Max Torque Max Drehmoment M2 (Nm)	Lubr.esterna Ext. coolant Aussenkuehlung	Lav. secco Dry-run Trocken Bearb.	A	A1	ØD	L	CHIAVI NON INCLUDE Keys not included Schlüssel nicht einbegriffen	
SAU0100125	SAU0101125	SAU0102125	ER25	1:1	6000	30	X	X	109.66	-	-	-	CHUB36	CHSTER25
SAU0100522	SAU0101522	SAU0102522	Ø22x19	1:1	6000	30	X	X	-	90.5	22	19	CHUB36	CH_VTCROCE_M10 *

- Chiave inclusa
- Key included
- Schlüssel inbegriffen

SAUTER  
VDI 30

MODULO MOTORIZZATO ASSIALE DISASSATO 36mm VDI30 DIN 5480  
Axial driven tool re-directed by 36mm VDI30 DIN 5480  
Axial angetriebenes Werkzeug achsversetzt um 36mm VDI30 DIN 5480

**M.T. srl**

Via Casino Albini 480  
Tel. 0541/956034-957884  
Fax 0541/956341  
47842 S. GIOVANNI IN M. (RN)  
e-mail: mtma@mtmarchetti.com  
http://www.mtmarchetti.com



SAU017-2-05

Subject to change without notice.

03/2026